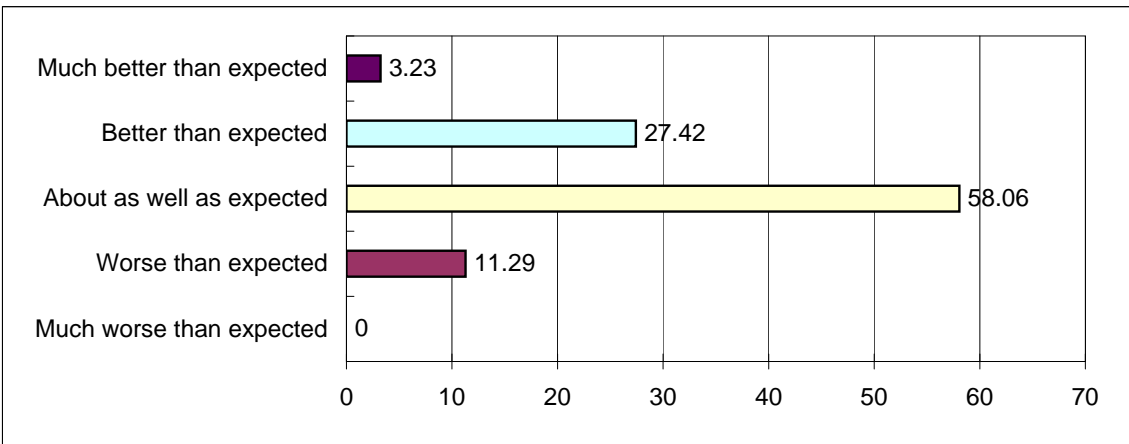


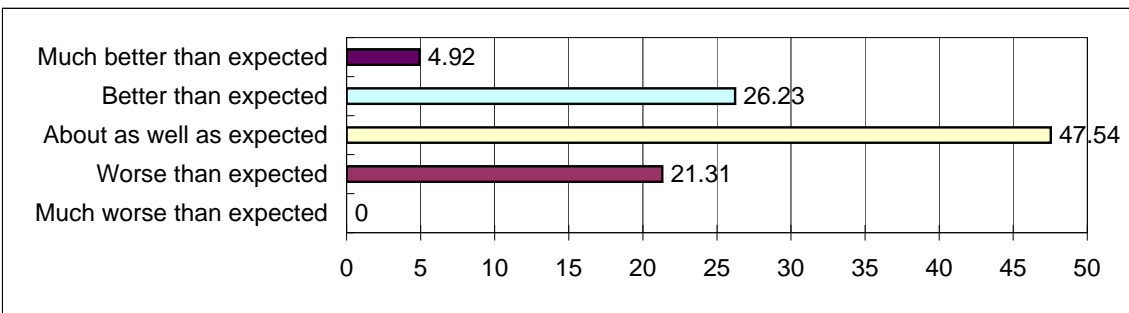


ERA PULSE ECONOMIC CONDITIONS SURVEY

How well did your company perform in January 2010?		
Responses	Count	%
Much worse than expected	0	0
Worse than expected	7	11.29
About as well as expected	36	58.06
Better than expected	17	27.42
Much better than expected	2	3.23
Total	62	



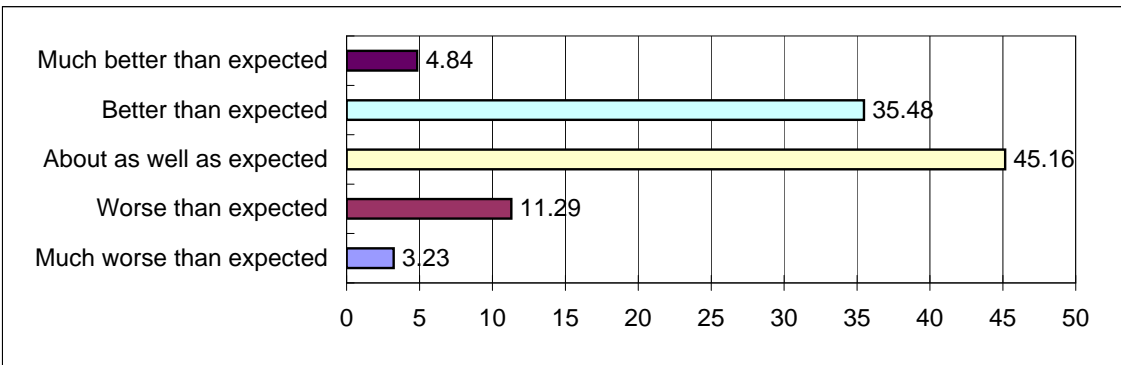
How well did your company perform in February 2010?		
Responses	Count	%
Much worse than expected	0	0
Worse than expected	13	21.31
About as well as expected	29	47.54
Better than expected	16	26.23
Much better than expected	3	4.92
Total	61	



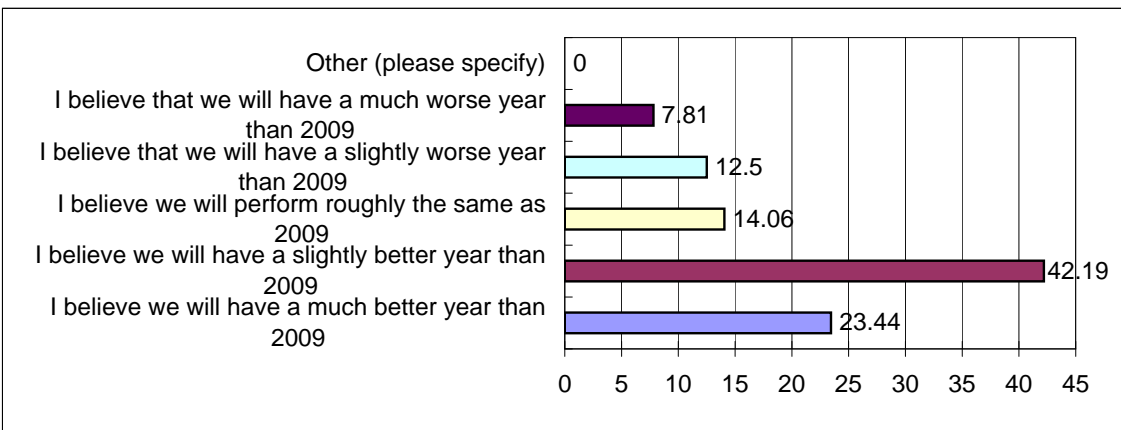


ERA PULSE ECONOMIC CONDITIONS SURVEY

How well did your company perform in March 2010?		
Responses	Count	%
Much worse than expected	2	3.23
Worse than expected	7	11.29
About as well as expected	28	45.16
Better than expected	22	35.48
Much better than expected	3	4.84
Total	62	



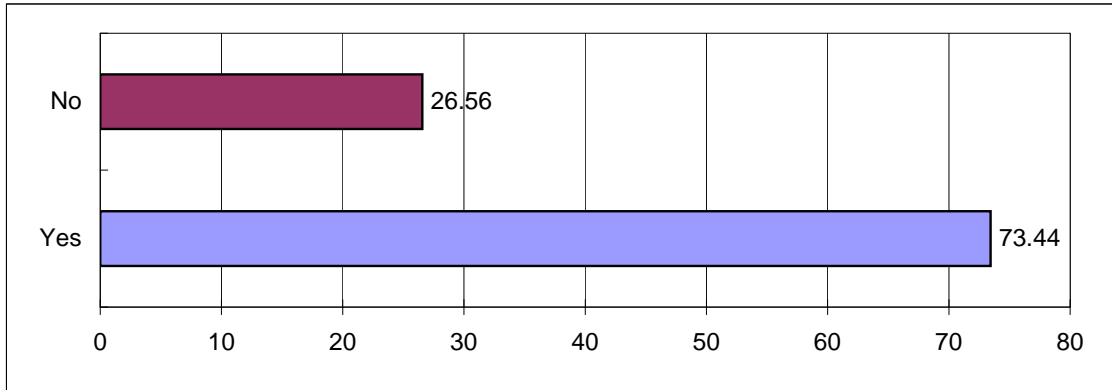
Q2.What is your outlook on your company's overall performance for the remainder of 2010?		
Responses	Count	%
I believe we will have a much better year than 2009	15	23.44
I believe we will have a slightly better year than 2009	27	42.19
I believe we will perform roughly the same as 2009	9	14.06
I believe that we will have a slightly worse year than 2009	8	12.5
I believe that we will have a much worse year than 2009	5	7.81
Other (please specify)	0	0
Total	64	





ERA PULSE ECONOMIC CONDITIONS SURVEY

Q3.Do you plan on doing any hiring in 2010?		
Responses	Count	%
Yes	47	73.44
No	17	26.56
Total	64	



Q4.What industry type best describes your organization?		
Responses	Count	%
Manufacturing	23	35.94
Wholesale/Distribution/Retail	10	15.63
Service	7	10.94
Financial	3	4.69
Healthcare	3	4.69
Non-Profit	9	14.06
Other	9	14.06
Total	64	

